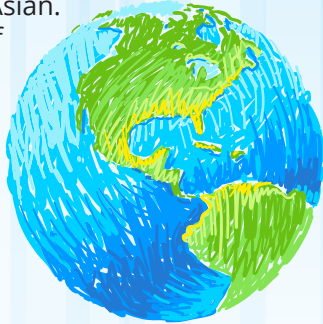


# Where It Matters

**U.S. Census shows** that 462,257 people live in Long Beach; 32,474 children are under the age of five, making up 7% of the city's total population; 19,306 infants and toddlers and 20,258 preschoolers live in Long Beach.

There are currently  
**32,474**  
 children living in Long Beach

Over 40% of the Long Beach population identifies as Latino/Hispanic, 29% identify as White, 13% identify as African American and over 12% identify as Asian. Approximately 26% of Long Beach residents are immigrants. The Long Beach Asian population is especially diverse and includes the largest Cambodian population living outside of Cambodia.



This Long Beach Early Childhood Education Plan outlines the City's long-term vision for prioritizing early learning opportunities and committing to a citywide collaborative systems approach to address the identified needs of young children in Long Beach.

— **Mayor Garcia**

It is imperative to move Long Beach in a direction of best practices and collective engagement to best support the children and families in our city. This plan identifies the essential core strategies to do this. I urge our partners and community to join the DHHS and the Long Beach Early Childhood Education Committee in prioritizing and supporting investment in the early years of life for the children in Long Beach.

— **Kelly Colopy, Director of DHHS**

We know from experience that the sooner we can bring children into a high quality learning environment, the more likely they are to succeed in their later years of schooling and in life.

— **Chris Steinhauser, Superintendent, LBUSD**

We are excited to assist in seeing the Plan to fruition and look forward to ensuring all children in our community are healthy, safe, and educated.

— **Long Beach Early Childhood Education Committee Chairs**



**City of Long Beach**  
 Department of Health & Human Services  
 2525 Grand Ave. • Long Beach, CA 90815  
 562.570.4120  
[www.LongBeach.gov/ECEP](http://www.LongBeach.gov/ECEP)

*In partnership with*



This workforce product was funded by a grant awarded by the U.S. Department of Labor's Employment and Training Administration. The product was created by the recipient and does not necessarily reflect the official position of the U.S. Department of Labor. The Department of Labor makes no guarantees, warranties, or assurances of any kind, express or implied, with respect to such information, including any information on linked sites and including, but not limited to, accuracy of the information or its completeness, timeliness, usefulness, adequacy, continued availability, or ownership. This product is copyrighted by the institution that created it.



## City of Long Beach, California Early Childhood Education Strategic Plan 2018-2023



# Why It Matters

**During the first few years of life**, 700 new neural connections are formed every second - laying the foundation for all future learning, behavior and development. Investments in early childhood education (ECE) help reduce the achievement gap, reduce the need for special education, increase the likelihood of healthier lifestyles, lower the crime rate, and reduce overall costs to society. In fact, every dollar invested in high-quality early childhood education produces a 7-10 percent return on the investment.

**90%**  
 of a child's brain  
 has formed  
 by age 5



**This Plan is organized** around a set of guiding principles which focuses on strengths, seeks to remove barriers, considers the "whole child" and ensures that all children and their families receive the respect and opportunities they need to succeed. To accomplish this, the Plan outlines the following seven goals which include objectives and activities that work to achieve each goal. Activities are organized as on-going, short-term, mid-term, and long-term, and are included in the full Plan. To view the Plan visit: [www.longbeach.gov/ECEP](http://www.longbeach.gov/ECEP)

# Early Childhood Strategic Plan Goals

## Goal 1

### Support and build strong and resilient families

#### This goal aims to

- Help families connect to doctors and mental health services
- Provide developmental screenings and connections to appropriate services
- Increase caregiver understanding of child development
- Make more community resources accessible to all who need them
- Provide community resources to those that need them

## Goal 2

### Increase access and affordability of infant through pre-k early care and education services

#### This goal aims to

- Ensure that all children have access to an early childhood education program before kindergarten, no matter their income
- Support early learning opportunities throughout Long Beach

## Goal 3

### Support the development of a stronger early childhood workforce

#### This goal aims to

- Demonstrate the importance of the work of early childhood professionals
- Ensure that Long Beach has the most informed workforce

## Goal 4

### Improve quality of birth through age 8 programs and services

#### This goal aims to

- Help increase the quality of all early learning centers in Long Beach
- Communicate the importance and value of high-quality early childhood learning programs



## Goal 5

### Ensure children in Long Beach live, learn and play in safe, healthy and accessible environments

#### This goal aims to

- Encourage professionals to use a trauma informed approach to support and engage families
- Ensure equitable access to parks for all young children
- Increase safety around community parks

## Goal 6

### Promote partnerships to address access to quality basic needs and services

#### This goal aims to

- Support a true partnership between professionals to ensure that children and families come first
- Ensure parent involvement in decisions about children and families
- Work together to help all children have a smooth transition into kindergarten

## Goal 7

### Strengthen alignment of existing birth through age 8 governance structure and early childhood support systems

#### This goal aims to

- Communicate progress of the plan's goals to the community
- Share the importance of early childhood with all decision makers
- Share information between programs for smooth use of services

